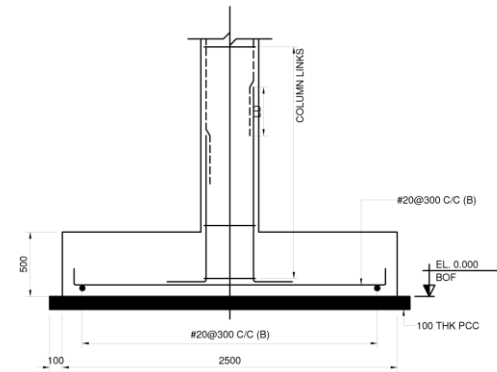
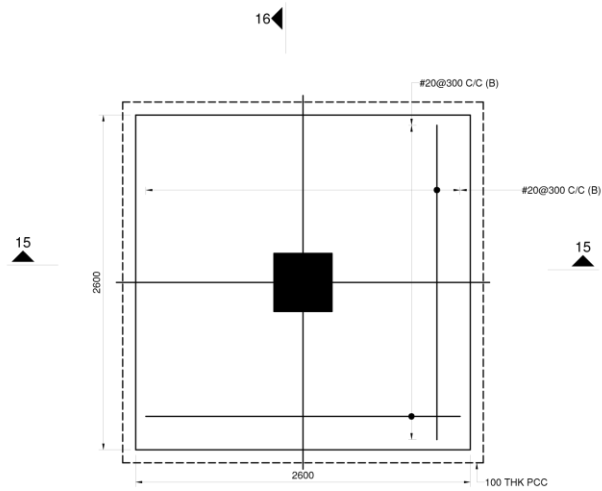




TYPICAL COLUMN DETAIL  
(SCALE 1:25)



TYPICAL COLUMN DETAIL  
(SCALE 1:25)




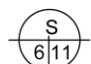
TYPICAL FOOTING PLAN  
(SCALE 1:25)

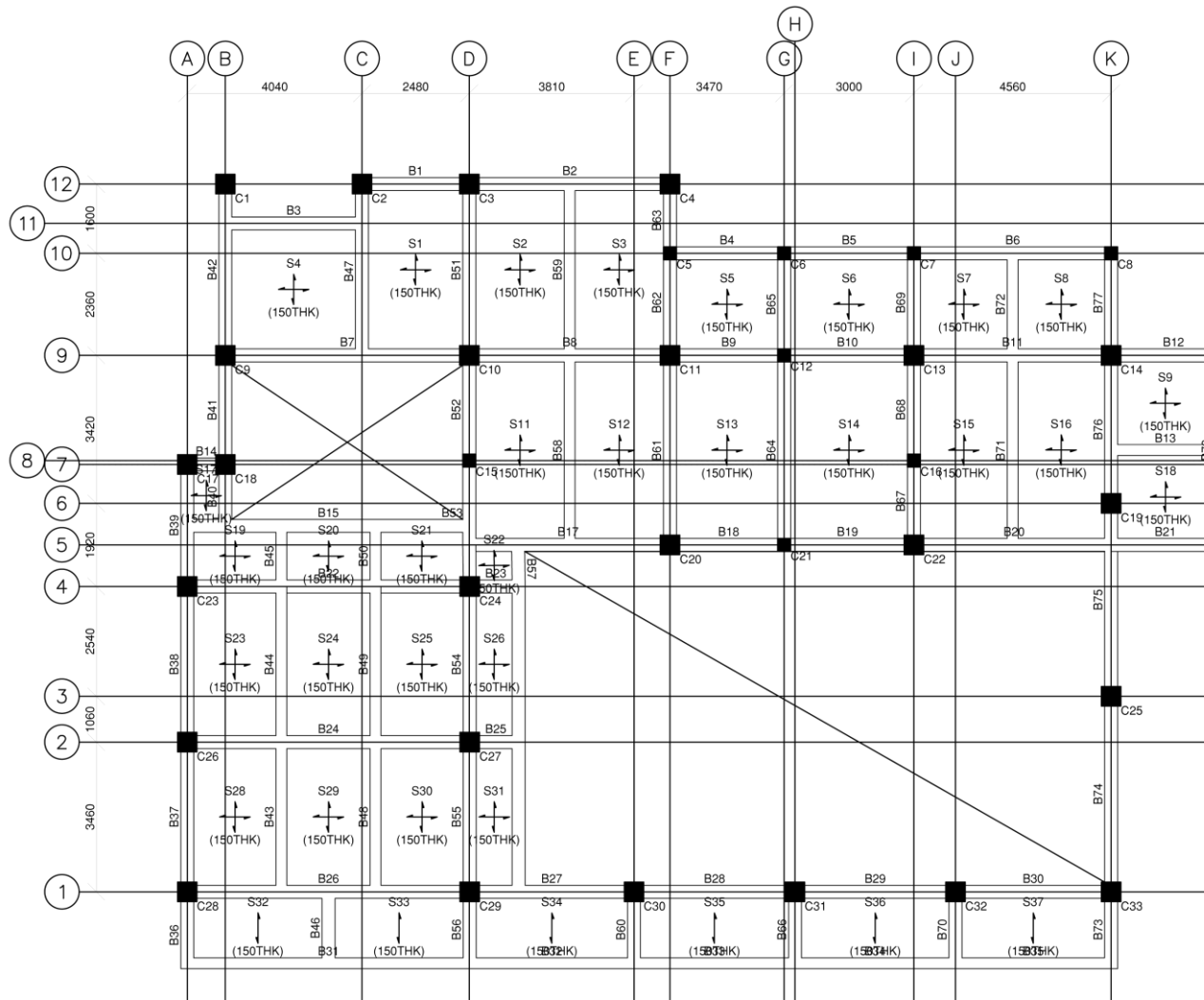
OWNER:	PROJECT TITLE:	CIVIL ENGINEER	NOTED BY:	RECOMMENDED BY / APPROVAL	APPROVED BY:	SHEET CONTENTS:	SHEET NO.
	<b>CONSTRUCTION OF FISH PROCESSING PLANT FACILITY</b> SAN RAMON, BONTOC SOUTHERN LEYTE	<b>JOMMAR V. TAGALOG</b> PRC No. _____ PTR No. _____ TIN No. _____	<b>JINKY F. LUMBRE</b> PPDMO-DESIGNATE	<b>GORDON B. OPINA</b> HEAD, ADMINISTRATION	<b>DEWOOWOOGEN P. BACLAYON, Ph.D</b> CAMPUS DIRECTOR	<b>COLUMN AND FOOTING DETAIL</b>	

## SLAB SCHEDULE (C20 : FY276) (LEVEL : 7.4M)


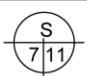
SLAB NUMBERS	THK	TYPE	BOTTOM REINFORCEMENT		TOP REINFORCEMENT		DISTRIBUTION
			SHORT SPAN (BENT UP)	LONG SPAN (BENT UP)	SS CONT.	LS CONT.	
S1	150	2-Way	#12 @ 230	#12 @ 230	#12 @ 230	--	#12 @ 230
S2, S3, S7, S8 S9, S12, S13 S14, S15, S16 S18, S19, S24 S25, S29, S30	150	2-Way	#12 @ 230	#12 @ 230	#12 @ 230	#12 @ 230	#12 @ 230
S4, S17, S26 S31	150	2-Way	#12 @ 230	#12 @ 230	--	#12 @ 230	#12 @ 230
S5, S6, S11 S20, S21, S22 S23, S28	150	2-Way	#12 @ 230	#12 @ 230	#12 @ 230	#12 @ 230	#12 @ 230
S32, S33	150	1-Way	#12 @ 230	--	--	--	#12 @ 230
S34, S35, S36 S37	150	1-Way	#12 @ 230	--	#12 @ 230	--	#12 @ 230

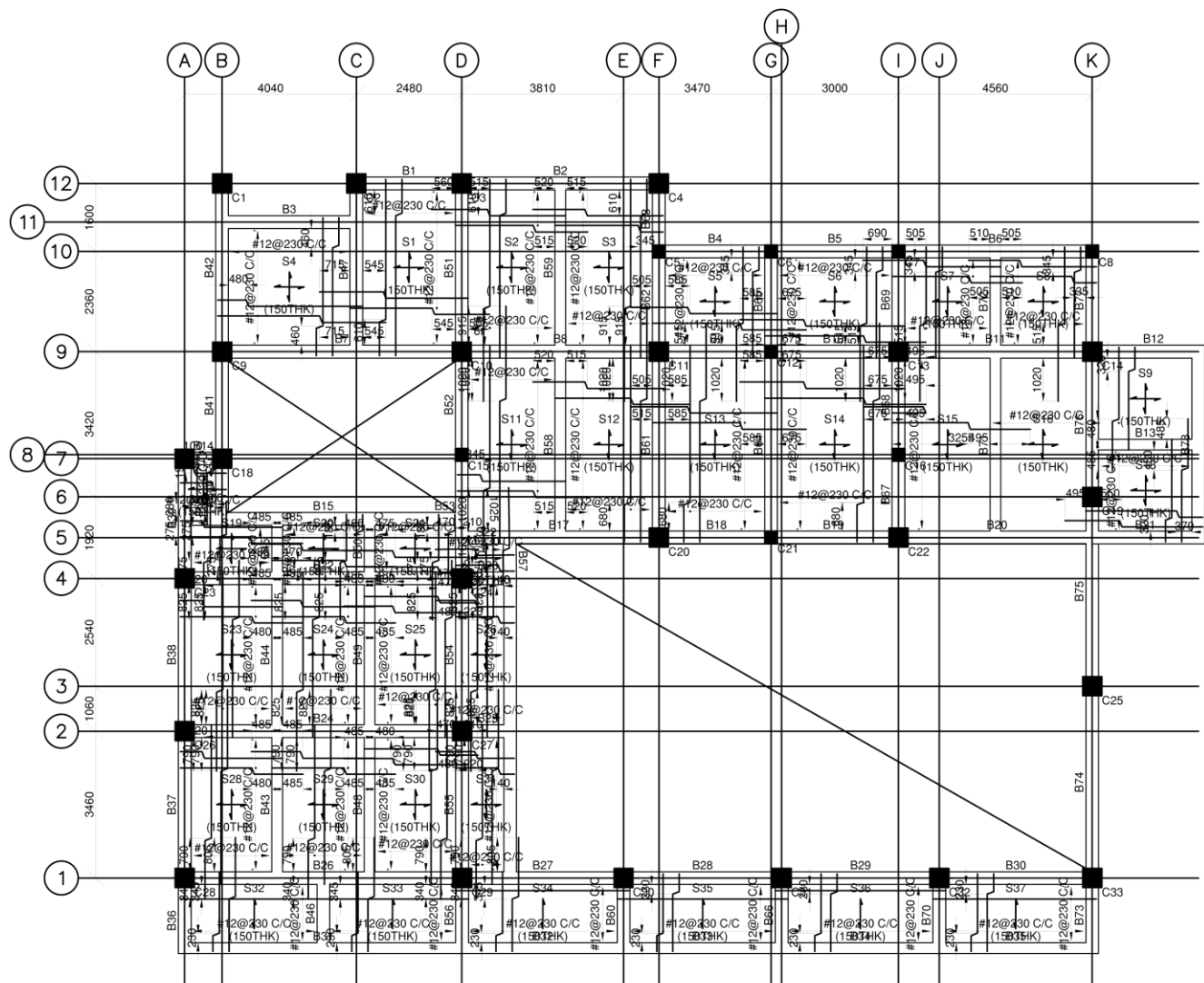
**NOTE: GRADE 60 = Fy 414 & GRADE 40 = Fy 276**

OWNER:	PROJECT TITLE:	CIVIL ENGINEER	NOTED BY:	REVISIONS/REVISIONS APPROVAL	APPROVED BY:	SHEET CONTENTS:	SHEET NO:
	CONSTRUCTION OF FISH PROCESSING PLANT FACILITY SAN RAMON, BONTOC SOUTHERN LEYTE	JOMMAR V. TAGALOG PRC No: PTR No: TIN No:	JINKY F. LUMBRE PPDMO-DESIGNATE	GORDON B. OPINA HEAD, ADMINISTRATION	DEWOOWOOGEN P. BACLAYON, Ph.D CAMPUS DIRECTOR	SLAB SCHEDULE	





PLAN AT 7.4M

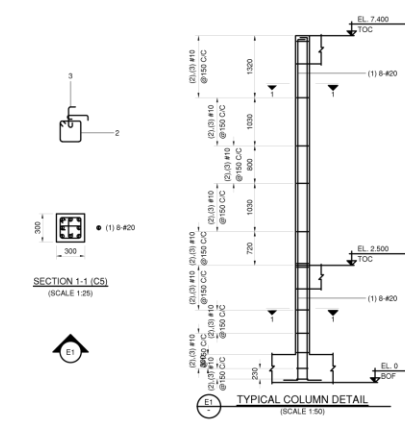
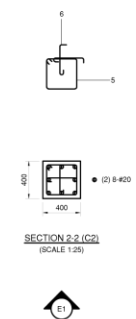
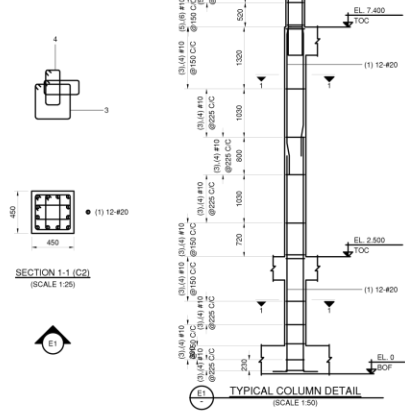
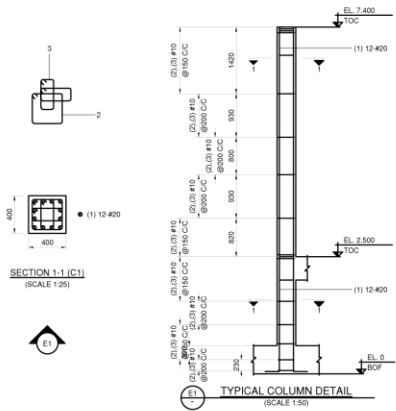
OWNER	PROJECT TITLE:	CIVIL ENGINEER	NOTED BY:	RECOMMENDED APPROVAL	APPROVED BY:	SHEET CONTENTS:	SHEET NO.
 BONTOC CAMPUS	<b>CONSTRUCTION OF FISH PROCESSING PLANT FACILITY</b> SAN RAMON, BONTOC SOUTHERN LEYTE	<b>JOMMAR V. TAGALOG</b>	<b>JINKY F. LUMBRE</b> PPDMO-DESIGNATE	<b>GORDON B. OPINA</b> HEAD, ADMINISTRATION	<b>DEWOOWOOGEN P. BACLAYON, Ph.D</b> CAMPUS DIRECTOR	<b>2F FLOOR FRAMING PLAN</b>	
		PRC No. PTR No. TIN No.					


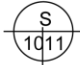


**BENTUP REINFORCEMENT LAYOUT - 7.4M**  
 (SCALE: H = 1:100 / V = 1:100)

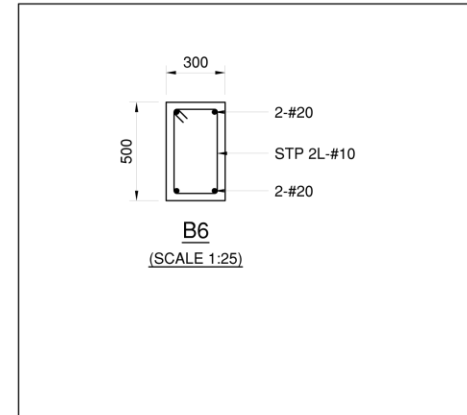
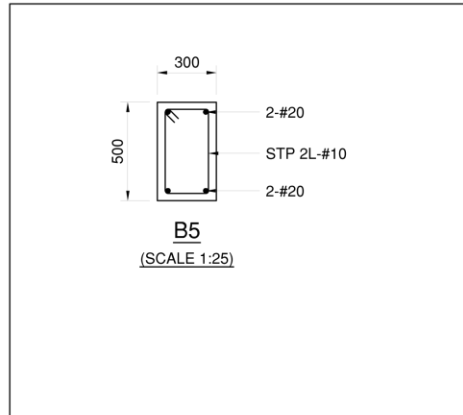
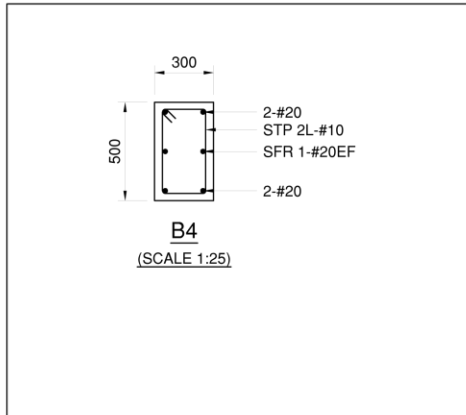
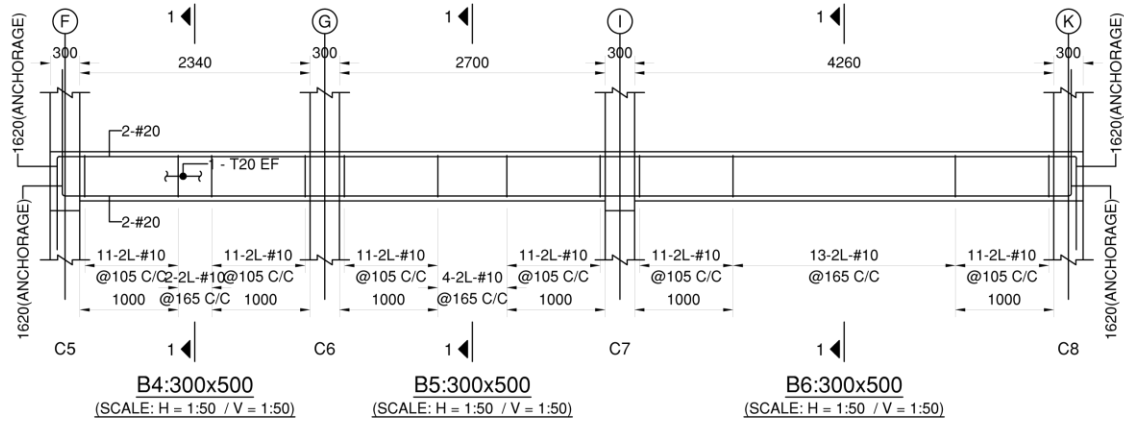
OWNER:	PROJECT TITLE:	CIVIL ENGINEER	NOTED BY:	RECOMMENDING OFFICIAL	APPROVED BY:	SHEET CONTENTS:	SHEET NO.:
 BONTOC CAMPUS	<b>CONSTRUCTION OF FISH PROCESSING PLANT FACILITY</b> SAN RAMON, BONTOC SOUTHERN LEYTE	<b>JOMMAR V. TAGALOG</b>	<b>JINKY F. LUMBRE</b> PPDMO-DESIGNATE	<b>GORDON B. OPINA</b> HEAD, ADMINISTRATION	<b>DEWOOWOGEN P. BACLAYON, Ph.D</b> CAMPUS DIRECTOR	<b>REINFORCEMENT LAYOUT</b>	
		PRC No. PTR No. TIN No.					


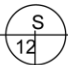




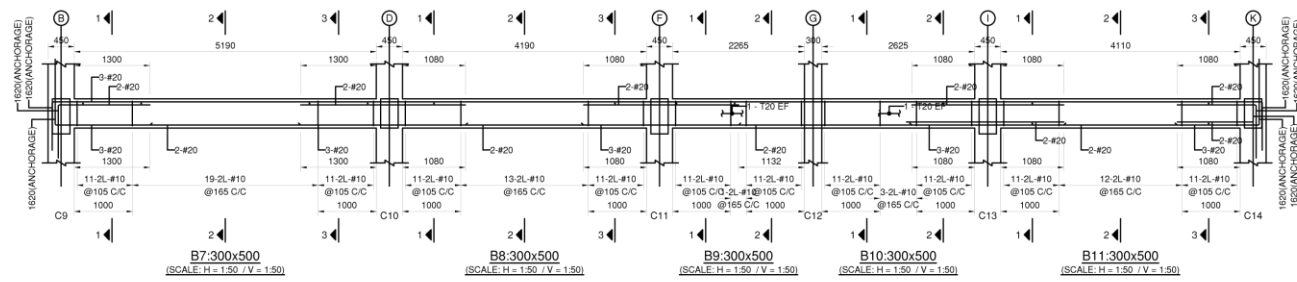
	PROJECT TITLE:	CIVIL ENGINEER:	NOTED BY:	RECOMMENDED APPROVAL:	APPROVED BY:	SHEET CONTENTS:	SHEET NO.:
	<b>CONSTRUCTION OF FISH PROCESSING PLANT FACILITY</b> SAN RAMON, BONTOC SOUTHERN LEYTE	<b>JOMMAR V. TAGALOG</b> PRC No. _____ PTR No. _____ TIN No. _____	<b>JINKY F. LUMBRE</b> PPDMO-DESIGNATE	<b>GORDON B. OPINA</b> HEAD, ADMINISTRATION	<b>DEWOOWOGEN P. BACLAYON, Ph.D</b> CAMPUS DIRECTOR	<b>COLUMN DETAIL</b>	





	PROJECT TITLE:	CIVIL ENGINEER:	NOTED BY:	REVISIONS/REVISIONS/REVISIONS	APPROVED BY:	SHEET CONTENTS:	SHEET NO.:
	<b>CONSTRUCTION OF FISH PROCESSING PLANT FACILITY</b> SAN RAMON, BONTOC SOUTHERN LEYTE	<b>JOMMAR V. TAGALOG</b> PRC No. _____ PTR No. _____ TIN No. _____	<b>JINKY F. LUMBRE</b> PPDMO-DESIGNATE	<b>GORDON B. OPINA</b> HEAD, ADMINISTRATION	<b>DEWOOWOOGEN P. BACLAYON, Ph.D</b> CAMPUS DIRECTOR	<b>BEAM SCHED</b>	





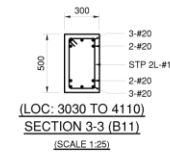
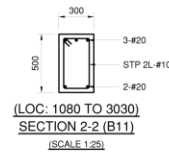
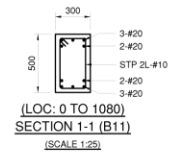
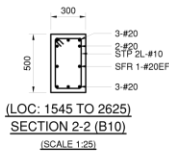
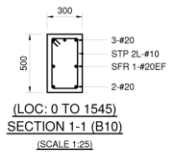
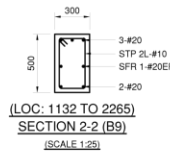
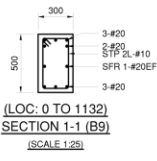
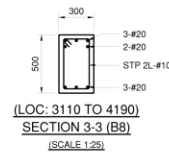
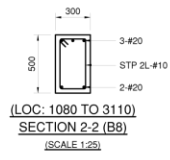
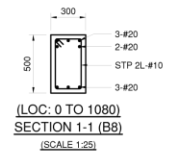
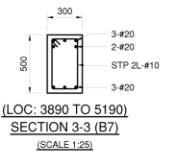
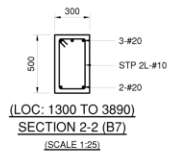
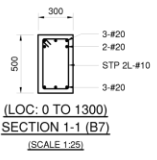
**B7:300x500**  
(SCALE: H = 1:50 / V = 1:50)


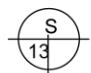
**B8:300x500**  
(SCALE: H = 1:50 / V = 1:50)

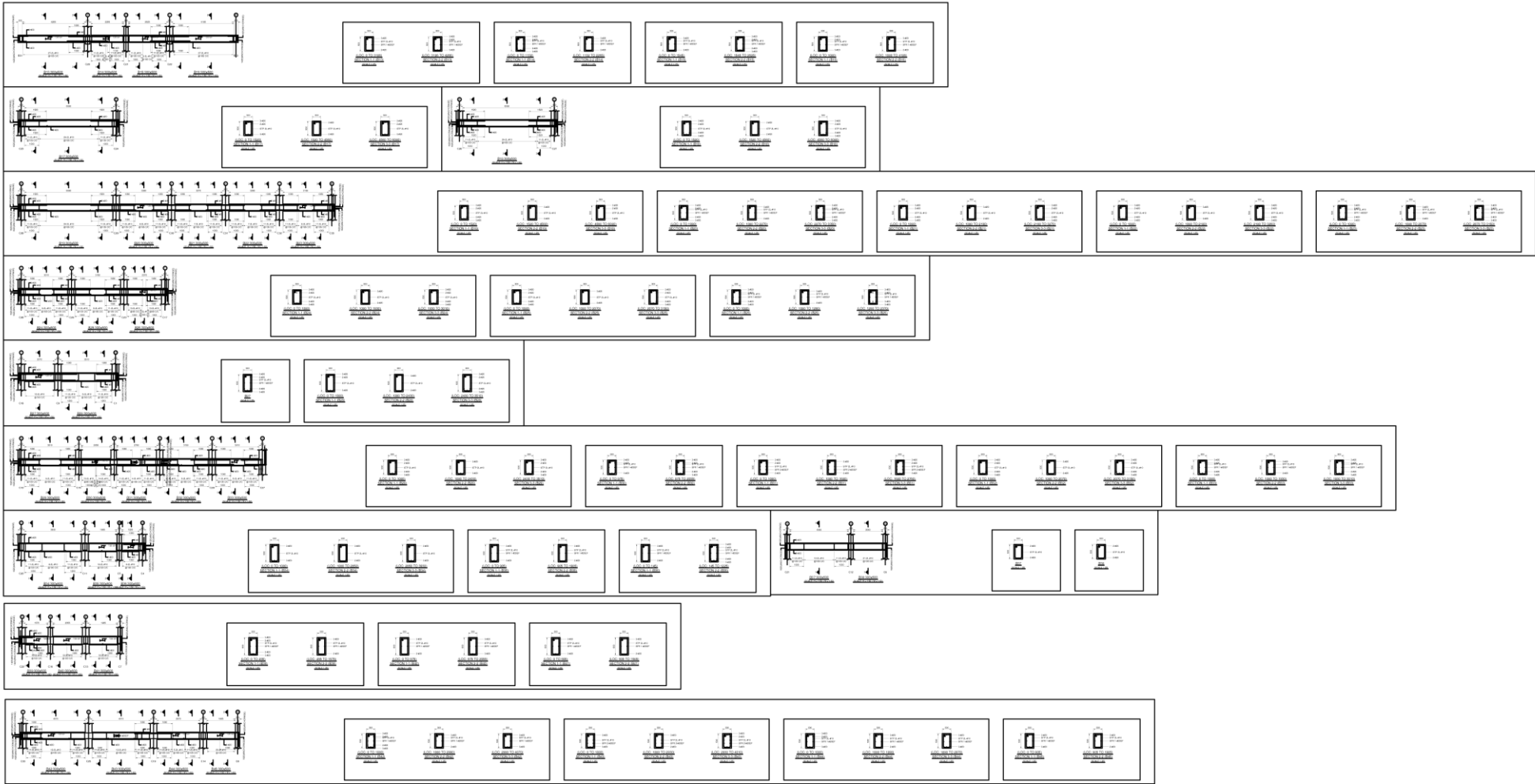
**B9:300x500**  
(SCALE: H = 1:50 / V = 1:50)


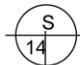
**B10:300x500**  
(SCALE: H = 1:50 / V = 1:50)

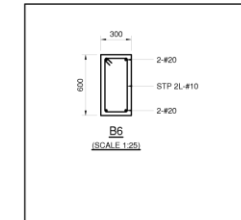
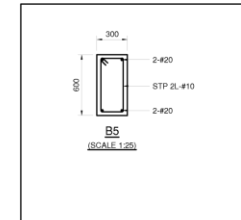
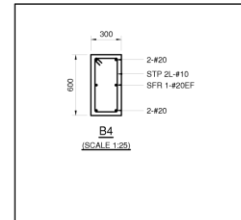
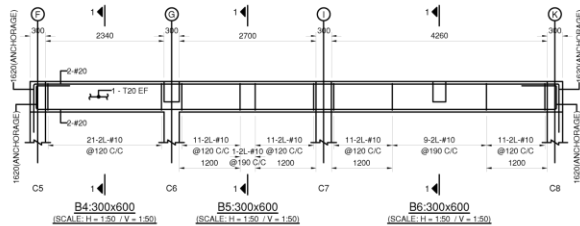
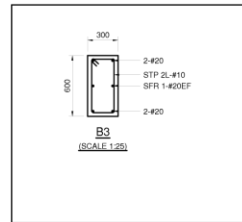
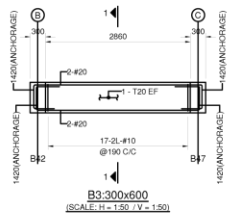
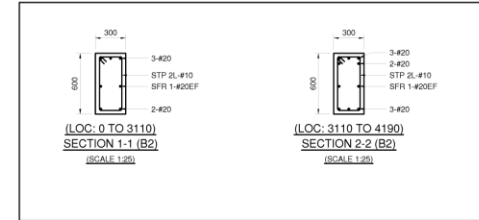
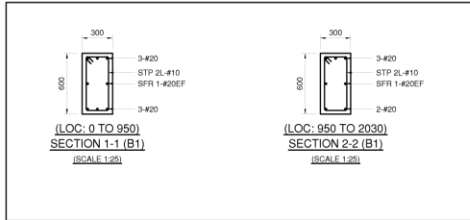
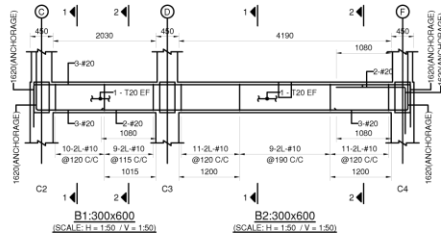
**B11:300x500**  
(SCALE: H = 1:50 / V = 1:50)


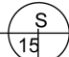


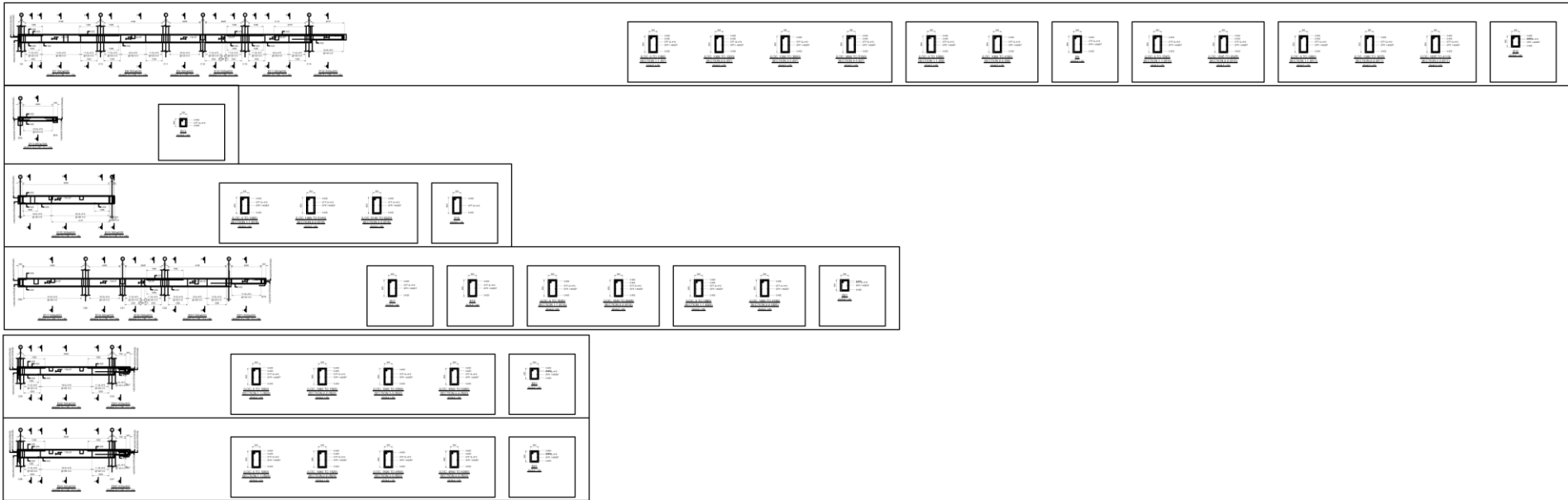
	PROJECT TITLE:	CIVIL ENGINEER	NOTED BY:	REVISIONS/REVISIONS	APPROVED BY:	SHEET CONTENTS:	SHEET NO.
	<b>CONSTRUCTION OF FISH PROCESSING PLANT FACILITY</b> SAN RAMON, BONTOC SOUTHERN LEYTE	<b>JOMMAR V. TAGALOG</b> PRC No: _____ PTR No: _____ TIN No: _____	<b>JINKY F. LUMBRE</b> PPDMO-DESIGNATE	<b>GORDON B. OPINA</b> HEAD, ADMINISTRATION	<b>DEWOOWOOGEN P. BACLAYON, Ph.D</b> CAMPUS DIRECTOR	<b>BEAM SCHED</b>	


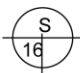


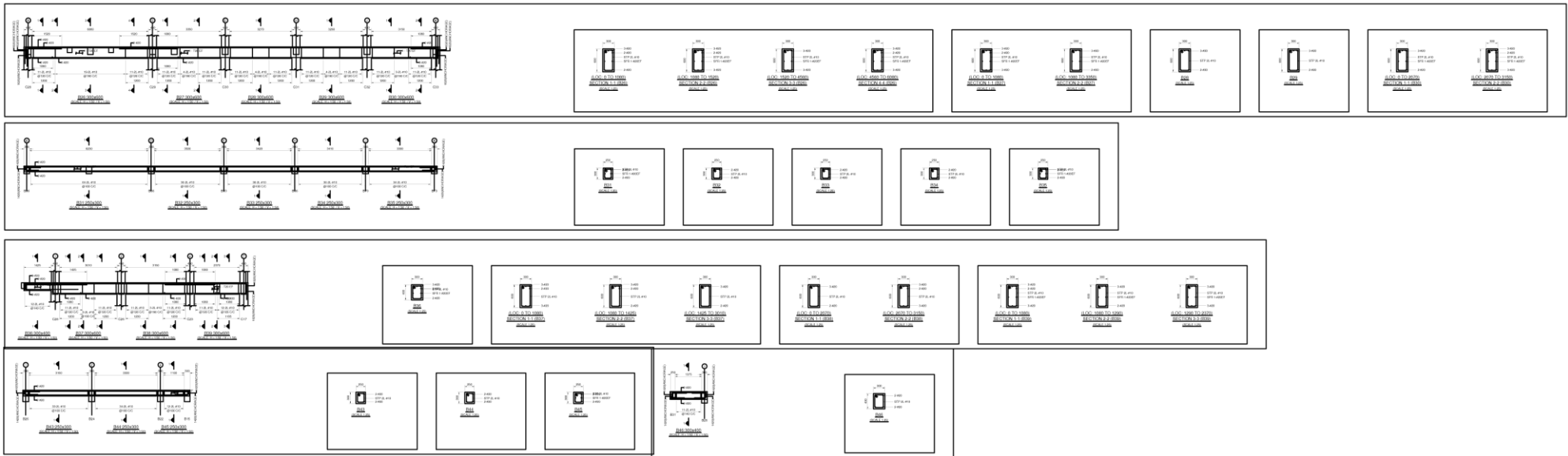
	PROJECT TITLE:	CIVIL ENGINEER	NOTED BY:	REVISIONS	APPROVED BY:	SHEET CONTENTS:	SHEET NO.:
	<b>CONSTRUCTION OF FISH PROCESSING PLANT FACILITY</b> SAN RAMON, BONTOC SOUTHERN LEYTE	<b>JOMMAR V. TAGALOG</b> PRC No. _____ PTR No. _____ TIN No. _____	<b>JINKY F. LUMBRE</b> PPDMO-DESIGNATE	<b>GORDON B. OPINA</b> HEAD, ADMINISTRATION	<del>REVISIONS</del> DEWOOWOGEN P. BACLAYON, Ph.D CAMPUS DIRECTOR	<b>BEAM SCHED</b>	





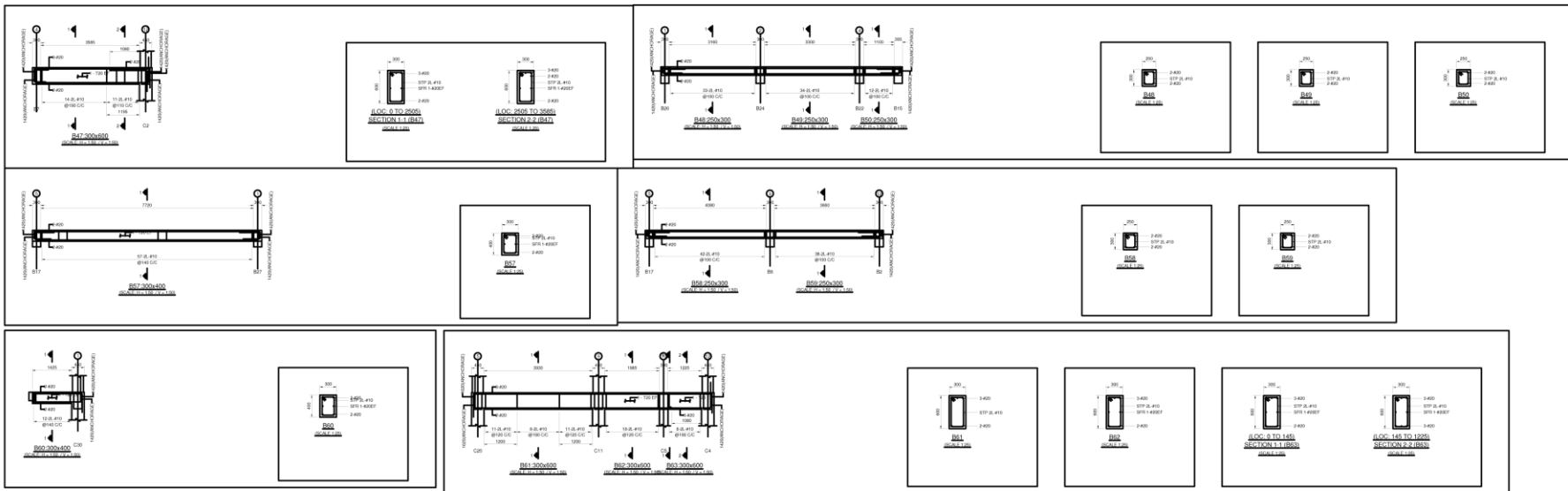
OWNER:	PROJECT TITLE:	CIVIL ENGINEER:	NOTED BY:	RECOMMENDING OFFICER/ APPROVAL:	APPROVED BY:	SHEET CONTENTS:	SHEET NO.:
	<b>CONSTRUCTION OF FISH PROCESSING PLANT FACILITY</b> SAN RAMON, BONTOC SOUTHERN LEYTE	<b>JOMMAR V. TAGALOG</b> PRC No. _____ PTR No. _____ TIN No. _____	<b>JINKY F. LUMBRE</b> PPDMO-DESIGNATE	<b>GORDON B. OPINA</b> HEAD, ADMINISTRATION	<b>DEWOOWOOGEN P. BACLAYON, Ph.D</b> CAMPUS DIRECTOR	<b>BEAM SCHED</b>	


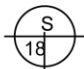


OWNER:	PROJECT TITLE:	CIVIL ENGINEER	NOTED BY:	REVISIONS/REVISIONS	APPROVED BY:	SHEET CONTENTS:	SHEET NO.:
 BONTOC CAMPUS	<b>CONSTRUCTION OF FISH PROCESSING PLANT FACILITY</b> SAN RAMON, BONTOC SOUTHERN LEYTE	<b>JOMMAR V. TAGALOG</b> PRC No. _____ PTR No. _____ TIN No. _____	<b>JINKY F. LUMBRE</b> PPDMO-DESIGNATE	<b>GORDON B. OPINA</b> HEAD, ADMINISTRATION	<b>DEWOOWOOGEN P. BACLAYON, Ph.D</b> CAMPUS DIRECTOR	<b>TIE BEAM LAYOUT</b>	 S 16

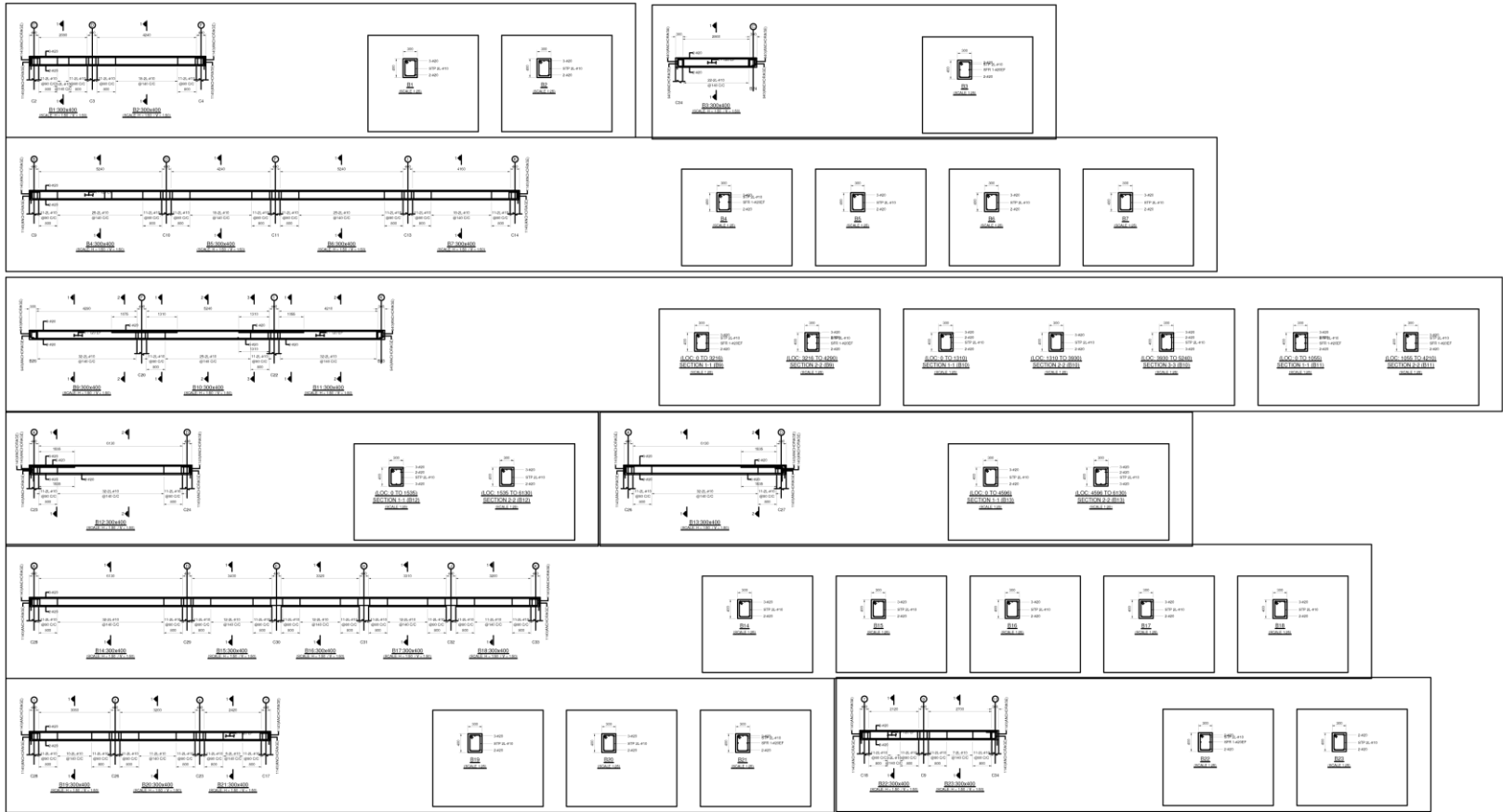



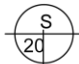
OWNER:	PROJECT TITLE:	CIVIL ENGINEER	NOTED BY:	RECOMMENDING APPROVAL	APPROVED BY:	SHEET CONTENTS:	SHEET NO.
 BONTOC CAMPUS	<b>CONSTRUCTION OF FISH PROCESSING PLANT FACILITY</b> SAN RAMON, BONTOC SOUTHERN LEYTE	<b>JOMMAR V. TAGALOG</b> PRC No. _____ PTR No. _____ TIN No. _____	<b>JINKY F. LUMBRE</b> PPDMO-DESIGNATE	<b>GORDON B. OPINA</b> HEAD, ADMINISTRATION	<b>DEWOOWOOGEN P. BACLAYON, Ph.D</b> CAMPUS DIRECTOR	<b>BEAM SCHED</b>	 17



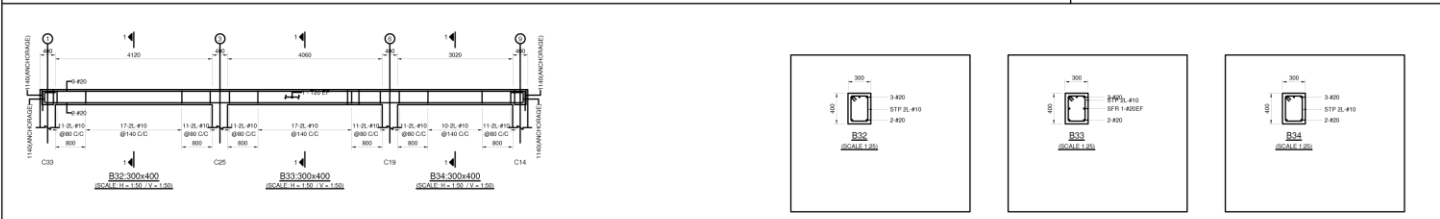
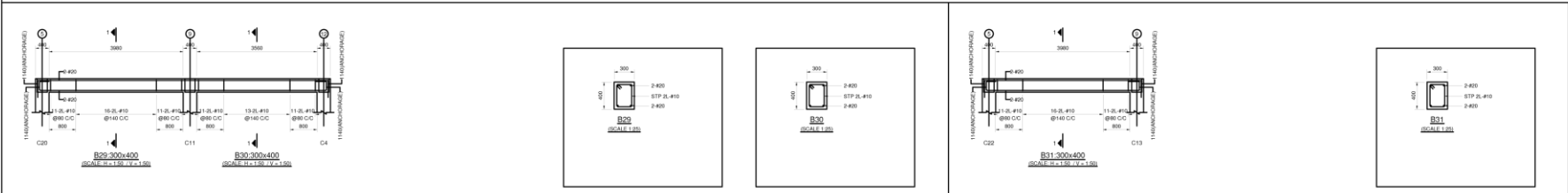
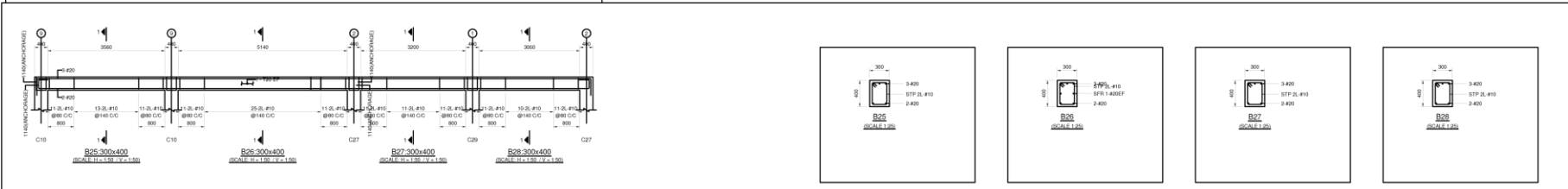
OWNER:	PROJECT TITLE:	CIVIL ENGINEER:	NOTED BY:	REVIEWED BY:	APPROVED BY:	SHEET CONTENTS:	SHEET NO.:
	<b>CONSTRUCTION OF FISH PROCESSING PLANT FACILITY</b> SAN RAMON, BONTOC SOUTHERN LEYTE	<b>JOMMAR V. TAGALOG</b> PRC No. _____ PTR No. _____ TIN No. _____	<b>JINKY F. LUMBRE</b> PPDMO-DESIGNATE	<b>GORDON B. OPINA</b> HEAD, ADMINISTRATION	<b>DEWOOWOOGEN P. BACLAYON, Ph.D</b> CAMPUS DIRECTOR	<b>BEAM SCHED</b>	


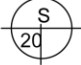




OWNER:	PROJECT TITLE:	CIVIL ENGINEER:	NOTED BY:	REVISIONS:	APPROVED BY:	SHEET CONTENTS:	SHEET NO.:
	<b>CONSTRUCTION OF FISH PROCESSING PLANT FACILITY</b> SAN RAMON, BONTOC SOUTHERN LEYTE	<b>JOMMAR V. TAGALOG</b> PRC No. _____ PTR No. _____ TIN No. _____	<b>JINKY F. LUMBRE</b> PPDMO-DESIGNATE	<b>GORDON B. OPINA</b> HEAD, ADMINISTRATION	<b>DEWOOWOGEN P. BACLAYON, Ph.D</b> CAMPUS DIRECTOR	<b>BEAM SCHED</b>	



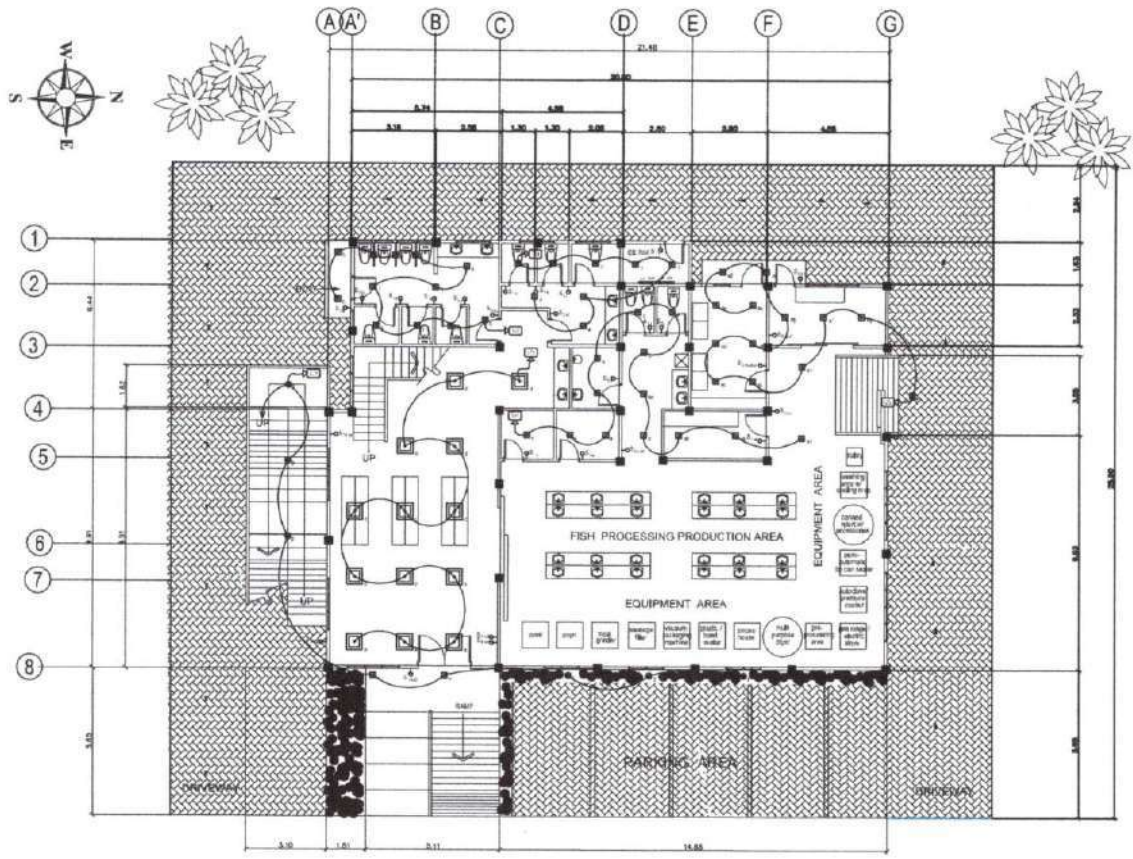


OWNER:	PROJECT TITLE:	CIVIL ENGINEER:	NOTED BY:	REVISIONS:	APPROVED BY:	SHEET CONTENTS:	SHEET NO.:
 BONTOC CAMPUS	<b>CONSTRUCTION OF FISH PROCESSING PLANT FACILITY</b> SAN RAMON, BONTOC SOUTHERN LEYTE	<b>JOMMAR V. TAGALOG</b>	<b>JINKY F. LUMBRE</b> PPDMO-DESIGNATE	<b>GORDON B. OPINA</b> HEAD, ADMINISTRATION	<b>DEWOOWOOGEN P. BACLAYON, Ph.D</b> CAMPUS DIRECTOR	<b>BEAM SCHED</b>	
		PRC No. _____ PTR No. _____ TIN No. _____					

---


# **ELECTRICAL PLANS**

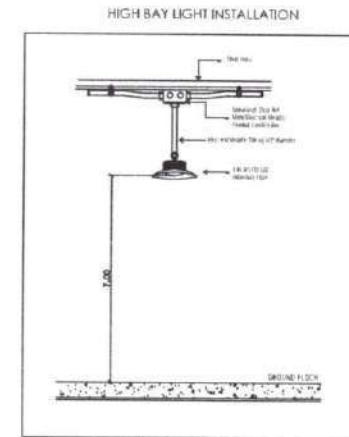
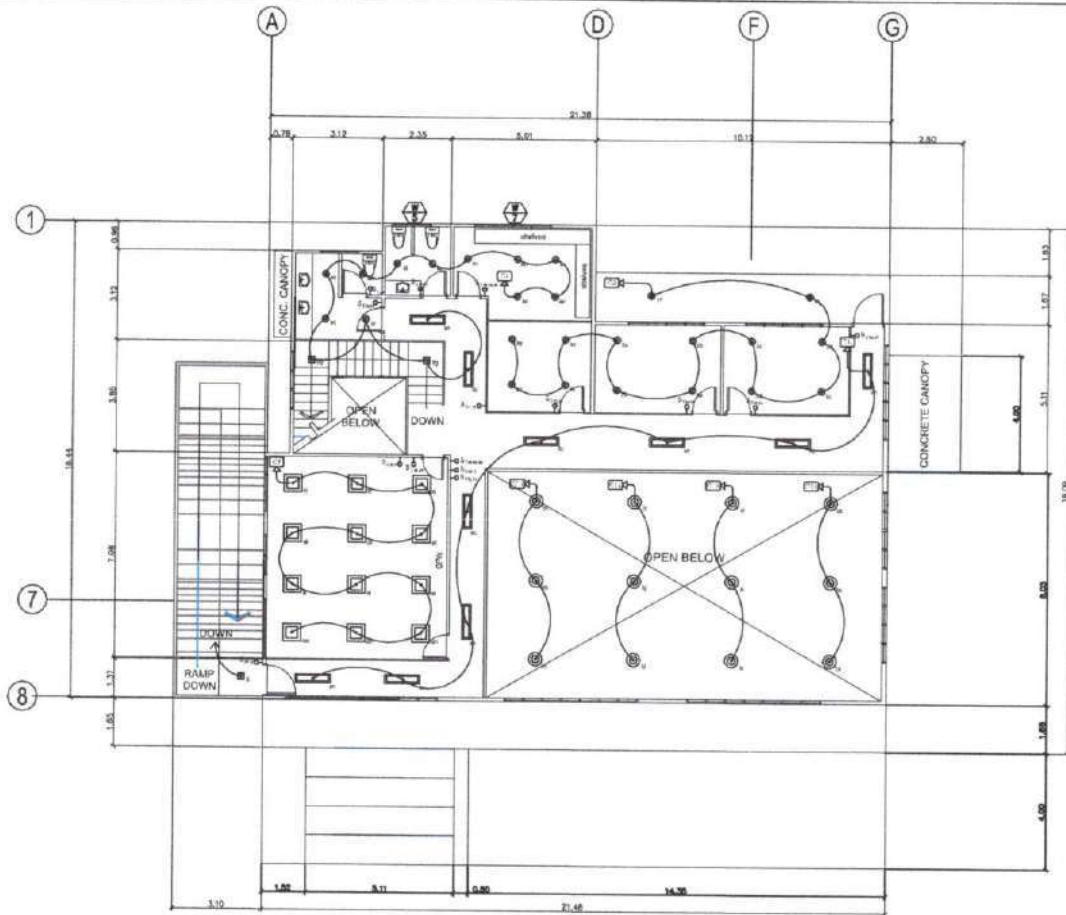
---



### GROUND FLOOR LIGHTING LAYOUT

SCALE 1:100 MTS.

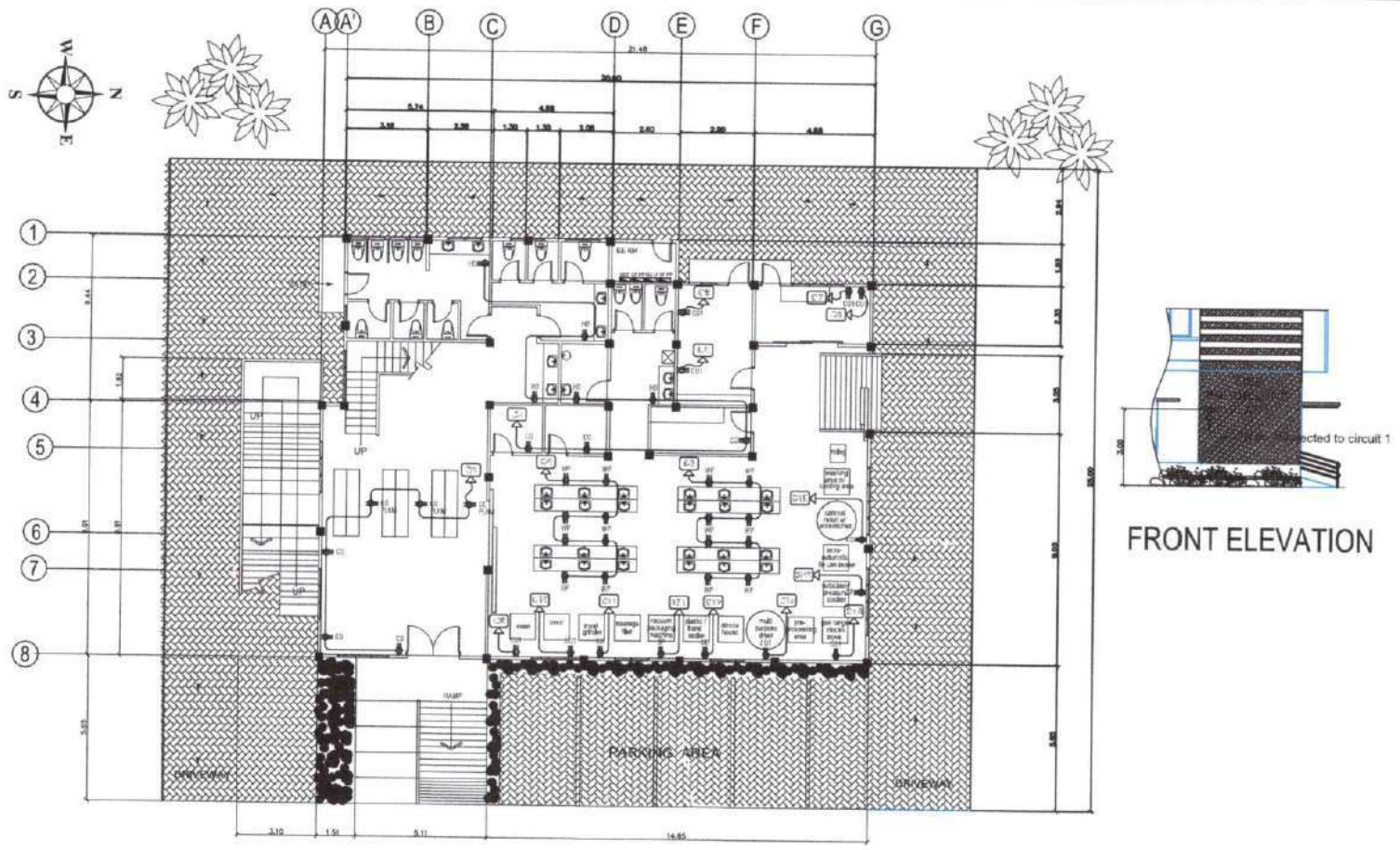
OWNER: 	PROJECT TITLE: <b>CONSTRUCTION OF FISH PROCESSING PLANT FACILITY</b> SAMI RAMON BORTOC SOUTHERN LEYTE	REGISTERED ELECTRICAL ENGINEER: <b>LIZANDRO C. BITANG</b>	NOTED BY: <i>Jinky F. Lumbre</i> <b>JINKY F. LUMBRE</b> DESIGNER	RECOMMENDING APPROVAL: <i>Gordon B. Opina</i> <b>GORDON B. OPINA</b> HEAD, ADMINISTRATION	APPROVED BY: <i>Dewoowoogen P. Baclayon</i> <b>DEWOOWOOGEN P. BACLAYON, Ph.D</b> CAMPUS DIRECTOR	SHEET CONTENTS: <b>GF LIGHTING LAYOUT</b>	SHEET NO.: <b>E 111</b>
-----------------------------------------------------------------------------------------------	-------------------------------------------------------------------------------------------------------------	--------------------------------------------------------------	---------------------------------------------------------------------------	----------------------------------------------------------------------------------------------------	-----------------------------------------------------------------------------------------------------------	----------------------------------------------	----------------------------



## SECOND FLOOR LIGHTING LAYOUT


SCALE 1:100 MTS.

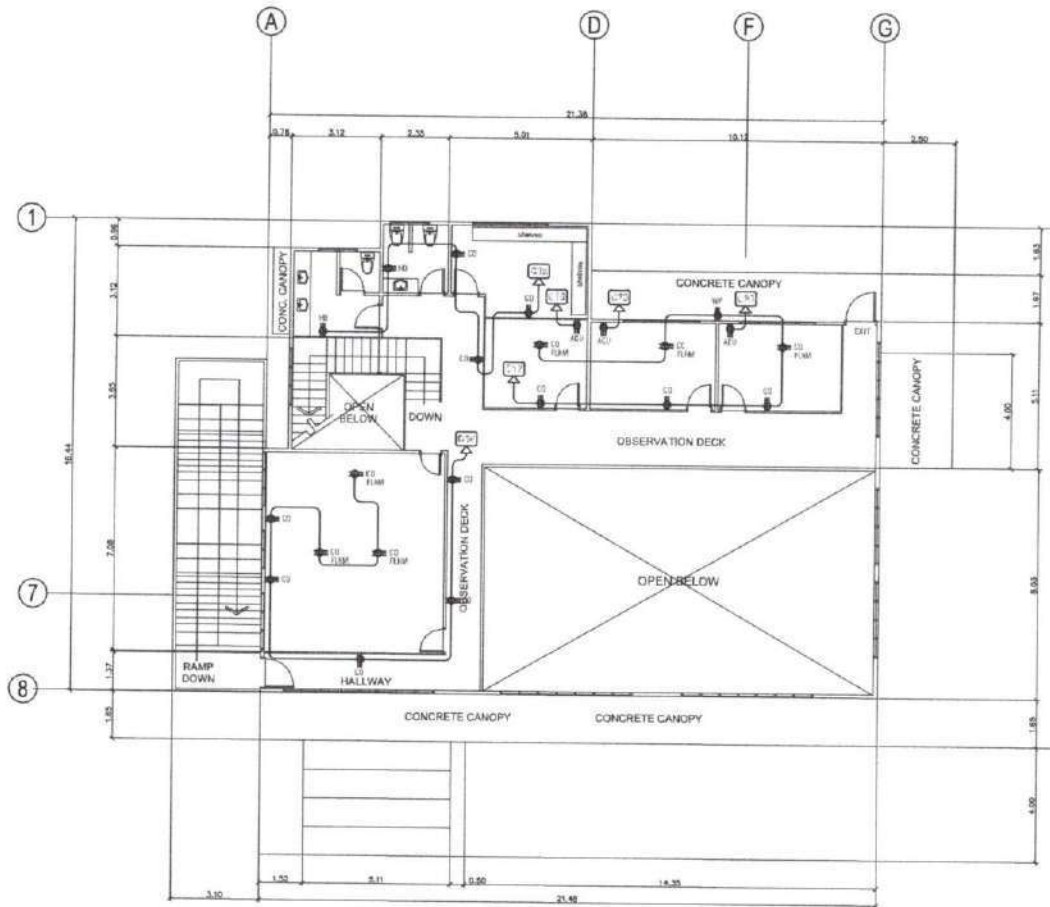
OWNER	PROJECT TITLE	REGISTERED ELECTRICAL ENGINEER	NOTED BY	RECOMMENDING APPROVAL	APPROVED BY	SHEET CONTENTS	SHEET NO.
 BONTOC CAMPUS	<b>CONSTRUCTION OF FISH PROCESSING PLANT FACILITY</b> SAN RAMON BONTOC SOUTHERN LEYTE	<b>LIZANDRO C. BITANG</b> <small>PRC No. PITR No. TEN No.</small>	 <b>JINKY P. LUMBRE</b> <small>PPRC DESIGNATE</small>	 <b>GORDON B. OPINA</b> <small>HEAD ADMINISTRATION</small>	 <b>DEWOOWOGEN P. BACLAYON, Ph.D</b> <small>CAMPUS DIRECTOR</small>	<b>2F LIGHTING LAYOUT</b>	



**GROUND FLOOR POWER LAYOUT**

SCALE 1:100 MTS.


OWNER:	PROJECT TITLE:	REGISTERED ELECTRICAL ENGINEER:	NOTED BY:	RECOMMENDING APPROVAL:	APPROVED BY:	SHEET CONTENTS:	SHEET NO.:
	<b>CONSTRUCTION OF FISH PROCESSING PLANT FACILITY</b> SAN RAMON, BONTOC SOUTHERN LEYTE	<b>LIZANDRO C. BITANG</b>	<i>Jinky F. Lumbre</i> <b>JINKY F. LUMBRE</b> PPMO-DESIGNATE	<b>GORDON B. OPINA</b> HEAD, ADMINISTRATION	<i>[Signature]</i> <b>DEWOOWOODEN P. BACLAYON, Ph.D</b> CAMPUS DIRECTOR	<b>GF POWER LAYOUT</b>	



### SECOND FLOOR POWER LAYOUT

SCALE

1:100 MTS.

OWNER	PROJECT TITLE	REGISTERED ELECTRICAL ENGINEER	NOTED BY:	RECOMMENDING APPROVAL:	APPROVED BY:	SHEET CONTENTS:	SHEET NO.
	<p><b>CONSTRUCTION OF FISH PROCESSING PLANT FACILITY</b> SAN RAMON, BONTOC SOUTHERN LEYTE</p>	<p><b>LIZANDRO C. BITANG</b></p>	<p><i>Jinky P. Lumbre</i> <b>JINKY P. LUMBRE</b> PERMIO DESIGNATE</p>	<p><i>Gordon B. Opina</i> <b>GORDON B. OPINA</b> HEAD, ADMINISTRATION</p>	<p><i>Dewoowoogen P. Baclayon, Ph.D.</i> <b>DEWOOWOOGEN P. BACLAYON, Ph.D</b> CAMPUS DIRECTOR</p>	<p>GF LIGHTING LAYOUT</p>	<p><b>E</b> 4/11</p>

## ***Section VIII. Bill of Quantities***





***Section IX. Checklist of Technical and Financial Documents***

# Checklist of Technical and Financial Documents

## I. TECHNICAL COMPONENT ENVELOPE

### *Class "A" Documents*

#### Legal Documents

- (a) Valid PhilGEPS Registration Certificate (Platinum Membership) (all pages);  
**or**
- (b) Registration certificate from Securities and Exchange Commission (SEC), Department of Trade and Industry (DTI) for sole proprietorship, or Cooperative Development Authority (CDA) for cooperatives or its equivalent document;  
**and**
- (c) Mayor's or Business permit issued by the city or municipality where the principal place of business of the prospective bidder is located, or the equivalent document for Exclusive Economic Zones or Areas;  
**and**
- (e) Tax clearance per E.O. No. 398, s. 2005, as finally reviewed and approved by the Bureau of Internal Revenue (BIR).

#### Technical Documents

- (f) Statement of the prospective bidder of all its ongoing government and private contracts, including contracts awarded but not yet started, if any, whether similar or not similar in nature and complexity to the contract to be bid; **and**
- (g) Statement of the bidder's Single Largest Completed Contract (SLCC) similar to the contract to be bid, except under conditions provided under the rules; **and**
- (h) Philippine Contractors Accreditation Board (PCAB) License;  
**or**  
Special PCAB License in case of Joint Ventures;  
**and** registration for the type and cost of the contract to be bid; **and**
- (i) Original copy of Bid Security. If in the form of a Surety Bond, submit also a certification issued by the Insurance Commission;  
**or**  
Original copy of Notarized Bid Securing Declaration; **and**
- (j) Project Requirements, which shall include the following:
  - a. Organizational chart for the contract to be bid;
  - b. List of contractor's key personnel (*e.g.*, Project Manager, Project Engineers, Materials Engineers, and Foremen), to be assigned to the contract to be bid, with their complete qualification and experience data;
  - c. List of contractor's major equipment units, which are owned, leased, and/or under purchase agreements, supported by proof of ownership or certification of availability of equipment from the equipment lessor/vendor for the duration of the project, as the case may be; **and**
- (k) Original duly signed Omnibus Sworn Statement (OSS);

**and** if applicable, Original Notarized Secretary's Certificate in case of a corporation, partnership, or cooperative; or Original Special Power of Attorney of all members of the joint venture giving full power and authority to its officer to sign the OSS and do acts to represent the Bidder.

Financial Documents

- (l) The prospective bidder's audited financial statements, showing, among others, the prospective bidder's total and current assets and liabilities, stamped "received" by the BIR or its duly accredited and authorized institutions, for the preceding calendar year which should not be earlier than two (2) years from the date of bid submission; **and**
- (m) The prospective bidder's computation of Net Financial Contracting Capacity (NFCC).

**Class "B" Documents**

- (n) If applicable, duly signed joint venture agreement (JVA) in accordance with RA No. 4566 and its IRR in case the joint venture is already in existence;  
**or**  
duly notarized statements from all the potential joint venture partners stating that they will enter into and abide by the provisions of the JVA in the instance that the bid is successful.

**II. FINANCIAL COMPONENT ENVELOPE**

- (o) Original of duly signed and accomplished Financial Bid Form; **and**

Other documentary requirements under RA No. 9184

- (p) Original of duly signed Bid Prices in the Bill of Quantities; **and**
- (q) Duly accomplished Detailed Estimates Form, including a summary sheet indicating the unit prices of construction materials, labor rates, and equipment rentals used in coming up with the Bid; **and**
- (r) Cash Flow by Quarter.

Republic of the Philippines



**SLSU**

**SOGOD. SOUTHERN LEYTE**